

# Global Executive MBA

## Time schedule 2025–2026

2025	March 11, Tue	Welcome Dinner
	March 12, Wed	Orientation Day
	March 13–16, Thu–Sun	Leading People and Building Resilient Organizations
	April 24–27, Thu–Sun	Strategic Marketing Management
	May 22–25, Thu–Sun	The Language of Business: Financial Reporting and Analysis
	June/July (Sun–Fri, tba)	Economies in Transition International Immersion
	July 31–August 3, Thu–Sun	Managing Sustainable Performance
	September 4–7, Thu–Sun	Data Analytics for Business Decisions
	October 2–5, Thu–Sun	Contemporary Issues Linking Business, Government, and Macroeconomic Trends
	November 6–9, Thu–Sun	Financial Management & Value Creation
	December 11–14, Thu–Sun	Strategic Management of Supply Chains and Operations
2026	January (approx. 10 days, tba)	Managing Globalization International Immersion
	March 12–15, Thu–Sun	Corporate and Entrepreneurial Strategy
	April 9–12, Thu–Sun	Negotiations Strategies: Creative Solutions for Complex Problems
	May (approx. 10 days, tba)	Global Strategies and Innovation/ Information Technology Management International Immersion
	May (tba)	Graduation Minneapolis
	June 17–18, Wed–Thu	Contemporary Issues in Global Business
	June 19, Fri	Graduation (Vienna, Austria)

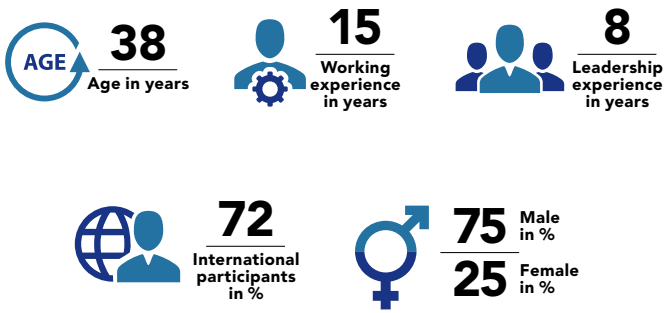
■ MBA Modules
 ■ International Immersion
 ■ Graduation

Physical attendance during all modules is mandatory. General teaching hours are from 9:00 am to 6:00 pm.

[executiveacademy.at/gemba](https://executiveacademy.at/gemba)

# Global Executive MBA Student Profile

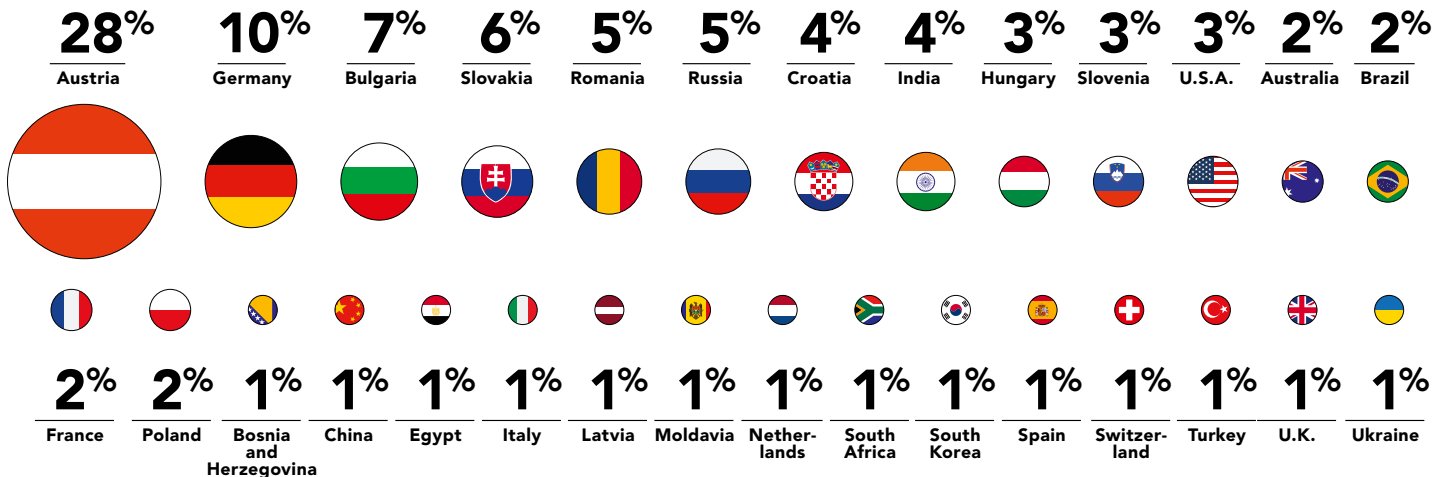
## AVERAGE CLASS PROFILE



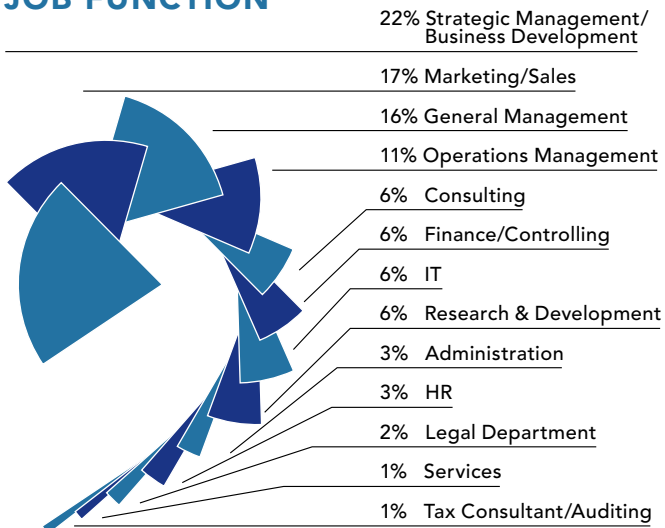
## MANAGEMENT LEVEL (%)



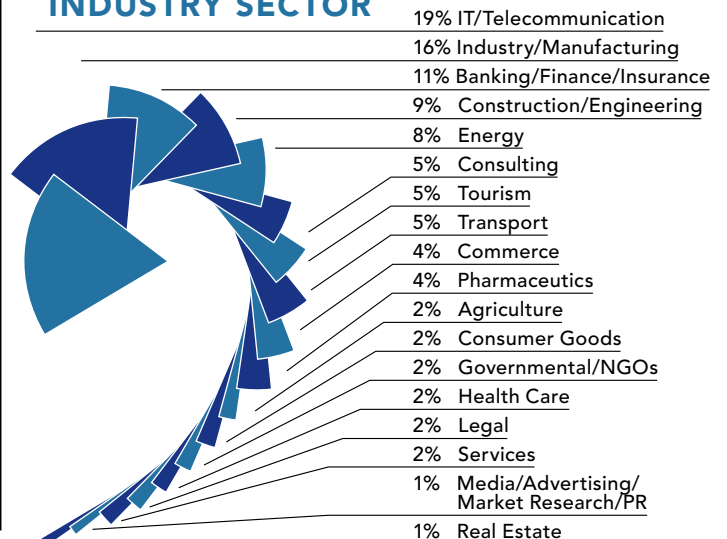
## NATIONALITY



## JOB FUNCTION



## INDUSTRY SECTOR



Based on last 3 intakes.