






Executive MBA Finance Time schedule 2024–2026

| SPECIALIZATION FINANCE (ON-CAMPUS) | | |
|------------------------------------|-----------------------------------|---|
| 2024 | October 10–13 Thu–Sun | Applied Corporate Finance |
| | November 14–17 Thu–Sun | Applied Financial Risk Management & Corporate Hedging |
| 2025 | January 31– February 2 Fri–Sun | Valuation & Topics in Investment Banking |
| | March 7–9 Fri–Sun | Portfolio Investment & Management |
| | April 25–27 Fri–Sun | Behavioral Finance |
| | Summer semester Dates tba | International Residency Hot Topics in Finance |

Modules take place from 8:30am to 5:30pm, if not stated otherwise. Attendance is mandatory.

| BUSINESS CORE (PARTICIPANTS STATE THEIR PREFERRED TRACK UPON APPLICATION) | | | | |
|---|---------------------------|----|---|---|
| | On-Campus Track | or | Hybrid Track | Modules |
| 2025 | October 13–19 Mon–Sun | | October 13–19 Mon–Sun | Orientation & Lift-Off › Managing People › Managing Organizations › Competitive Analysis & Strategy › Entrepreneurship & Innovation › Managerial Economics › Data Analysis & Decision Making › Financial Reporting › Financial Management › Controlling › Marketing Management › Global Markets › Operations Management › Information Systems Management › Leadership › Leadership Lab: Special Topics › Ethics & Corporate Social Responsibility |
| | November 20–23 Thu–Sun | | November 21–22 ¹ Fri–Sat (+ online sessions)  | |
| 2026 | January 8–11 Thu–Sun | | January 8–11 Thu–Sun | |
| | February 12–15 Thu–Sun | | February 13–14 ¹ Fri–Sat (+ online sessions)  | |
| | March 19–22 Thu–Sun | | March 19–22 Thu–Sun | |
| | May 7–10 Thu–Sun | | May 8–9 ¹ Fri–Sat (+ online sessions)  | |
| | June 10–14 Thu–Mon | | June 10–14 Thu–Mon | |
| | June 30 Tue | | | |
| | September/October | | | Graduation (Vienna, Austria) |

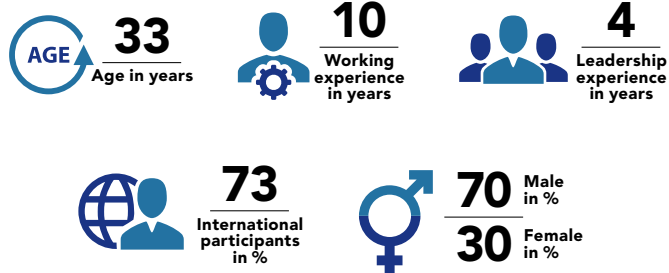
 On-Campus teaching  Online, synchronous teaching

¹Online blocks consist of 2 full days of synchronous online sessions (see dates) and additional sessions (~2 day equivalent) prior to/after the synchronous sessions.

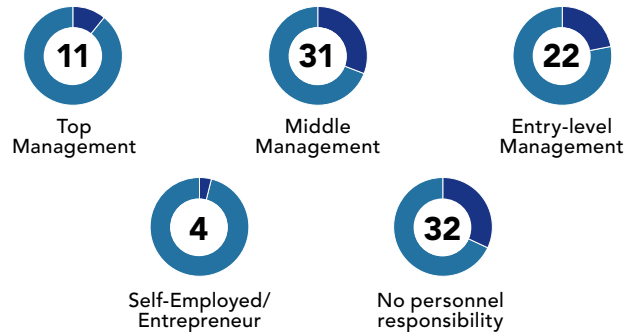
executiveacademy.at/mba-fin

Executive MBA Finance Student Profile

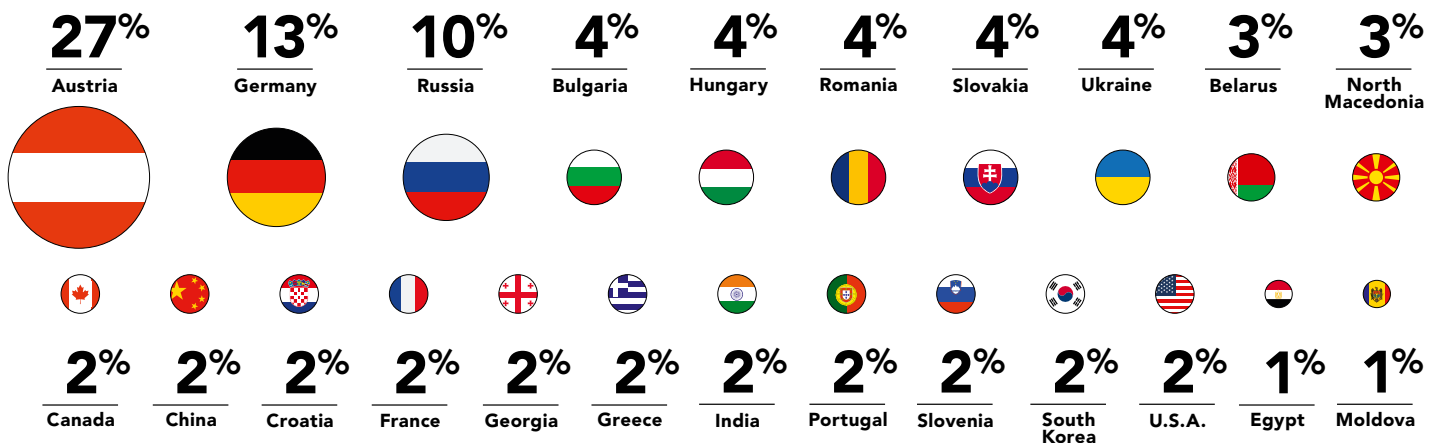
AVERAGE CLASS PROFILE



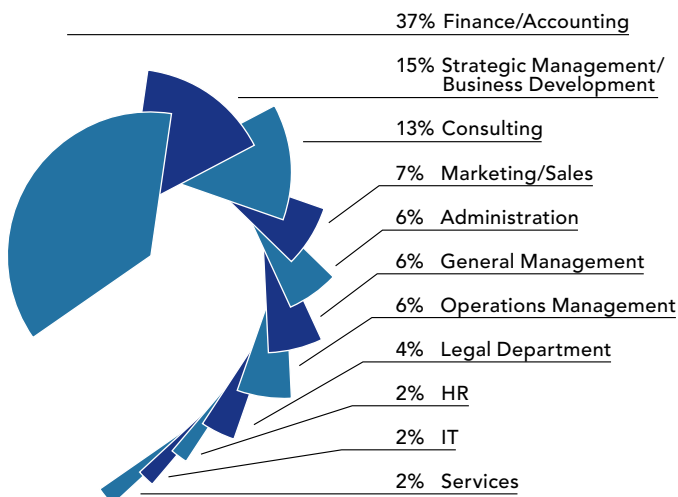
MANAGEMENT LEVEL (%)



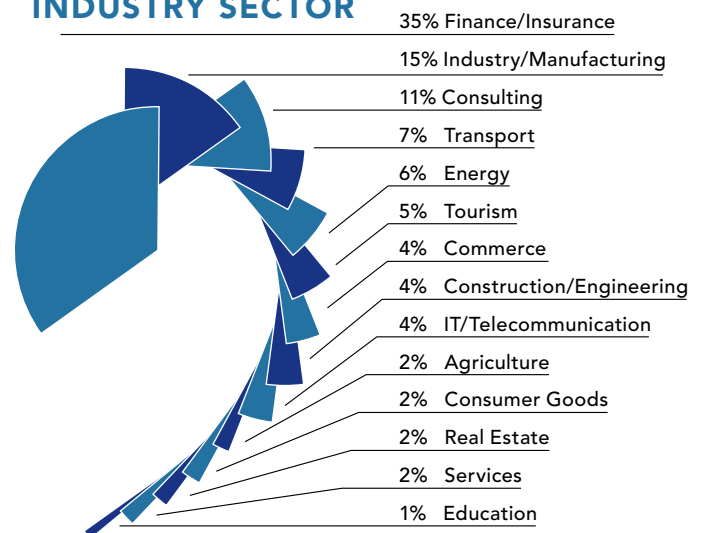
NATIONALITY



JOB FUNCTION



INDUSTRY SECTOR



Based on last 3 intakes