




# Executive MBA

## Time schedule 2024–2026

BUSINESS CORE (PARTICIPANTS STATE THEIR PREFERRED TRACK UPON APPLICATION)				
	On-Campus Track	or	Hybrid Track	Modules
2024	October 14–20 Mon–Sun		October 14–20 Mon–Sun	Orientation & Lift-Off › Managing People › Managing Organizations › Competitive Analysis & Strategy › Entrepreneurship & Innovation › Managerial Economics › Data Analysis & Decision Making › Financial Reporting › Financial Management › Controlling › Marketing Management › Global Markets › Operations Management › Information Systems Management › Leadership › Leadership Lab: Special Topics › Ethics & Corporate Social Responsibility
	November 21–24 Thu–Sun		November 22–23 <sup>1</sup> Fri–Sat (+ online sessions) 	
2025	January 9–12 Thu–Sun		January 9–12 Thu–Sun	
	February 13–16 Thu–Sun		February 14–15 <sup>1</sup> Fri–Sat (+ online sessions) 	
	March 20–23 Thu–Sun		March 20–23 Thu–Sun	
	May 8–11 Thu–Sun		May 9–10 <sup>1</sup> Fri–Sat (+ online sessions) 	
	June 12–16 Thu–Mon		June 12–16 Thu–Mon	

■ On-Campus teaching ■ Online, synchronous teaching

<sup>1</sup>Online blocks consist of 2 full days of synchronous online sessions (see dates) and additional sessions (~2 day equivalent) prior to/after the synchronous sessions.

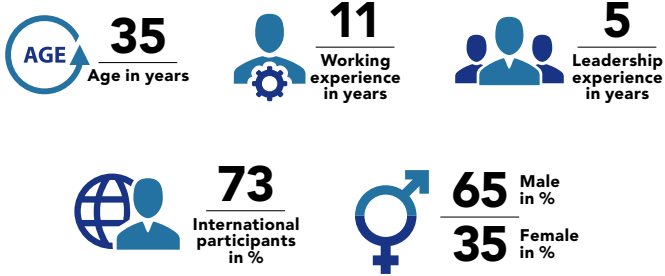
SPECIALIZATION (ON-CAMPUS)		
2025	September, Thu–Sun	› DIGITAL TRANSFORMATION & DATA SCIENCE › ENERGY MANAGEMENT › ENTREPRENEURSHIP & INNOVATION › FINANCE › MARKETING & SALES › STRATEGIC PROJECT MANAGEMENT › PUBLIC AUDITING
	October, Thu–Sun	
	November, Thu–Sun	
2026	January, Thu–Sun	
	March, Thu–Sun	
	April, Thu–Sun	
	June 30, Tue	Master's Thesis Submission Date
	September/October	Graduation (Vienna, Austria)

Modules take place from 8:30 am to 5:30 pm, if not stated otherwise. Attendance is mandatory.

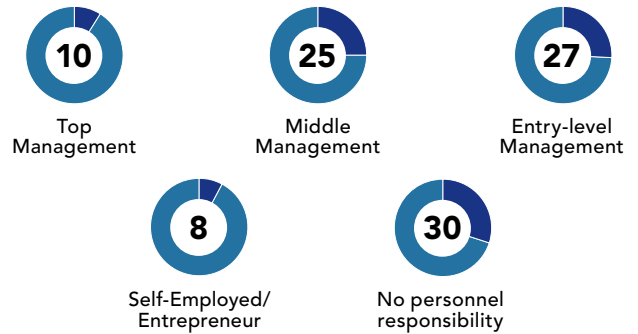
[executiveacademy.at/emba](https://executiveacademy.at/emba)

# Executive MBA Student Profile

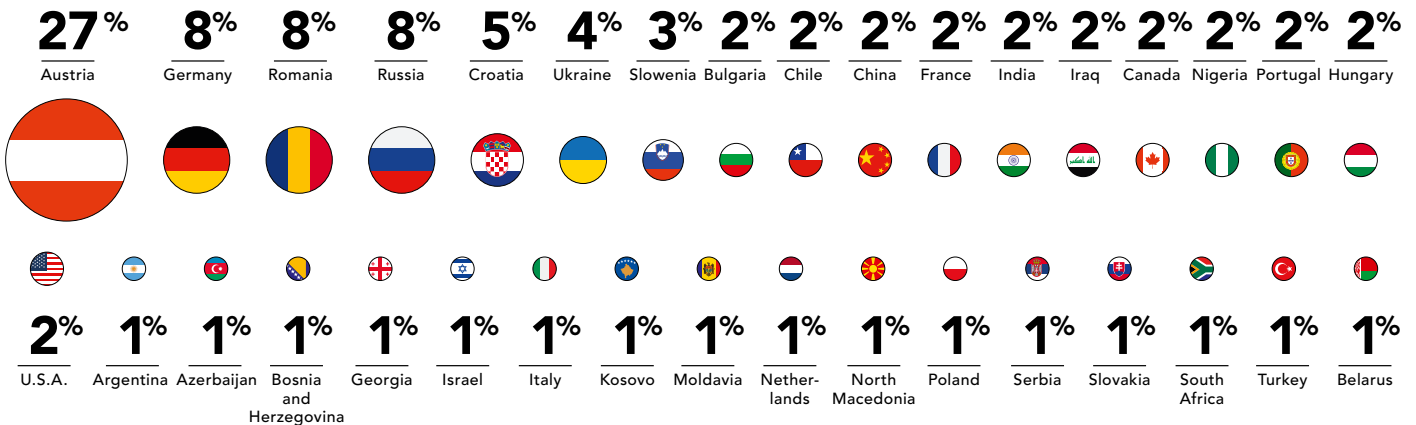
## AVERAGE CLASS PROFILE



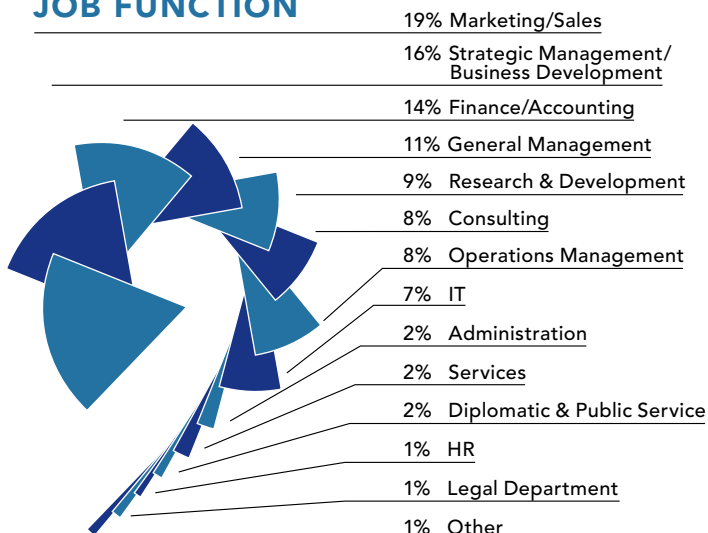
## MANAGEMENT LEVEL (%)



## NATIONALITY



## JOB FUNCTION



## INDUSTRY SECTOR

