



Professional MBA Energy Management Time schedule 2021–2023

BUSINESS CORE (PARTICIPANTS STATE THEIR PREFERRED TRACK UPON APPLICATION)			
	On-Campus Track	or Hybrid Track	Modules
2021	October 11–17 Mon–Sun	October 11–17 Mon–Sun	Orientation & Lift-Off › Managing People › Managing Organizations › Competitive Analysis & Strategy › Entrepreneurship & Innovation › Managerial Economics › Data Analysis & Decision Making › Financial Reporting › Financial Management › Controlling › Marketing Management › Global Markets › Operations Management › Information Systems Management › Leadership › Leadership Lab: Special Topics › Ethics & Corporate Social Responsibility
	November 25–28 Thu–Sun	November 26–27 ¹ Fri–Sat (+ online sessions) 	
2022	January 13–16 Thu–Sun	January 13–16 Thu–Sun	
	February 17–20 Thu–Sun	February 18–19 ¹ Fri–Sat (+ online sessions) 	
	March 24–27 Thu–Sun	March 24–27 Thu–Sun	
	May 5–8 Thu–Sun	May 6–7 ¹ Fri–Sat (+ online sessions) 	
	June 16–20 Thu–Mon	June 16–20 Thu–Mon	

 On-Campus teaching  Online, synchronous teaching

¹Online blocks consist of 2 full days of synchronous online sessions (see dates) and additional sessions (~2 day equivalent) prior to/after the synchronous sessions.

SPECIALIZATION ENERGY MANAGEMENT (ON-CAMPUS)		
2022	October 17–22 Tue–Sat	Global Energy Outlook & Energy Policy/ Global Energy Market & Market Relations/ Renewable Energy
2023	January 14–20 Sat–Fri	Energy Regulation/Energy Lab/ Recent Strategic Challenges/ Strategizing in Energy Markets
	Summer semester (~9 days) Dates tba	International Residency – USA: Energy Trading/Recent Strategic Challenges/Energy Labs
	June 30 Fri	Master’s Thesis Submission Date

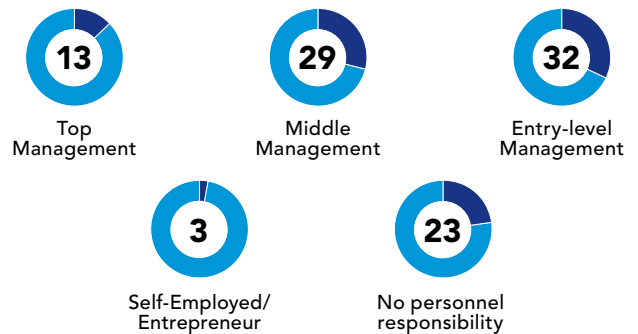
Modules take place 8:30am to 5:30pm, if not stated otherwise. Attendance is mandatory.

Professional MBA Energy Management Student Profile*

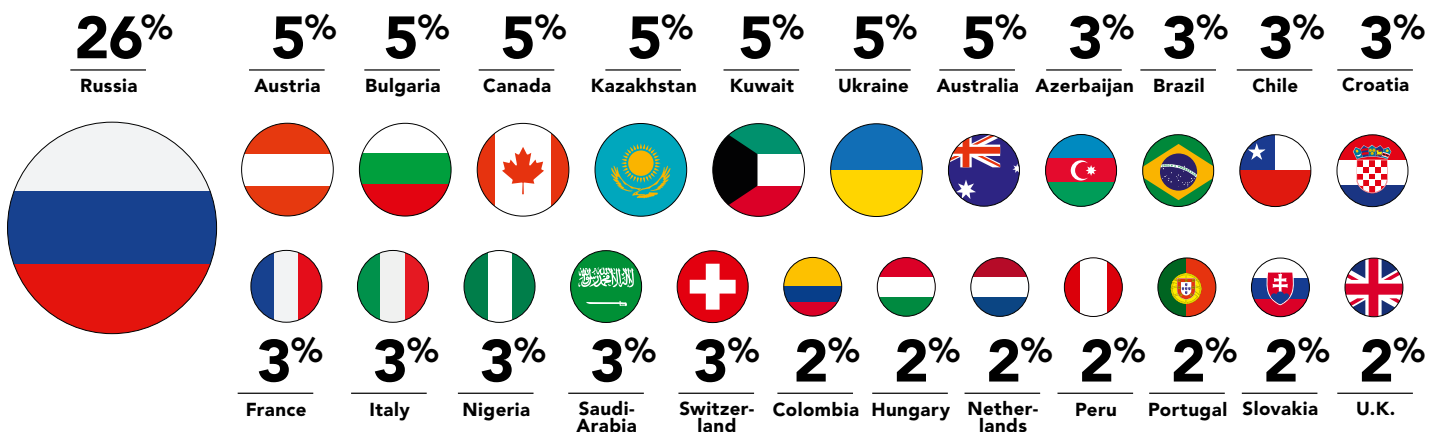
AVERAGE CLASS PROFILE



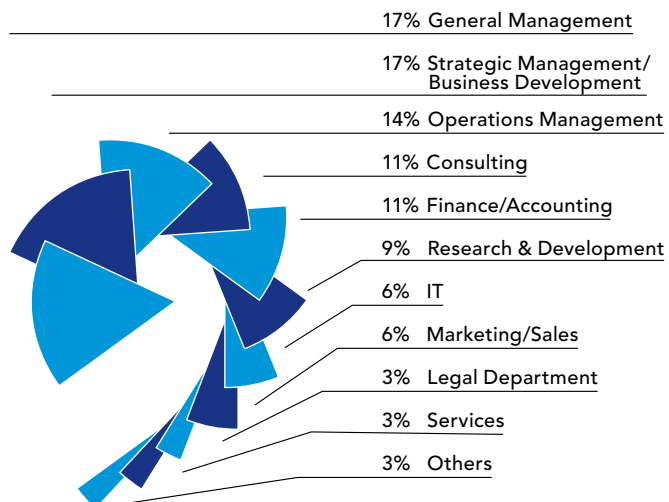
MANAGEMENT LEVEL (%)



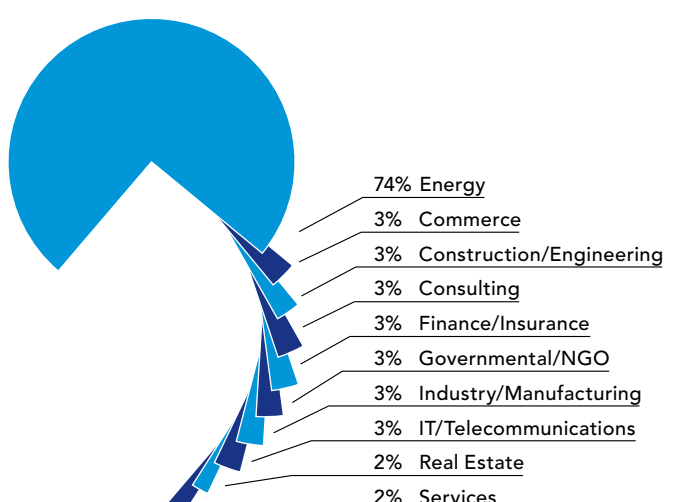
NATIONALITY



JOB FUNCTION



INDUSTRY SECTOR



* based on last 3 intakes